

04/ Marine

Maritime equipment in brackish water.
Extremely robust corrosion protection.



AR-PRIMER 12.5



66kg/1set

1st set	Emulsion	10kg	Grey
	Compound	23kg	
2nd set	Emulsion	10kg	Green
	Compound	23kg	

PRODUCT TESTING DATA

Salt Spray	JIS K 5600-7-1:1999 1,500 hours, 5% * ISO 7253; 720 hours is equivalent to 20 years	No rust
Weathering	JIS K 5600-7-7:2008 Xenon lamp	1,000 hours No blisters
Impact Resistance	JIS K 5600-5-3:1999 Falling-weight test Weight 1,000g, Height 30cm, 50cm	No cracking No peeling
Adhesion	Building Research Institute (JIS A 1171)	2.5 N/ mm ² +

AR-PRIMER 12.5

Inorganic Anti-Rust Primer Containing Carbon Fiber

- ◆ Main component
Emulsion : Acrylic macromolecule emulsion
Compound : Cement, Silica sand
- ◆ Uses
Follow the Application Guideline. For specific information refer to the Safety Data Sheet.
- ◆ Storage
Emulsion : Protect from freezing and direct sunlight.
Compound : Store in a dry area.
- ◆ First aid measures
If it contacts your skin, immediately wash your skin with plenty of water. Get medical attention if irritation develops or persists.

- Conforms to the JWWA regulations.
- Meets the requirement of the marine pollution prevention treaty; Marpol.

SUPPLIER

SPEC CO., LTD.
2-59 Ekimae-Odori, Toyohashi, Aichi 440-0888, JAPAN
PHONE : +81-532-53-6711
www.spec.to

MANUFACTURER

ARTISTIC DECOR CO., LTD.
3-81-2 Ekimae-Odori, Toyohashi, Aichi 440-0888, JAPAN
www.ar-primer.com



Mar. 2022

AR-PRIMER 12.5®

Inorganic Anti-Rust Primer
Containing Carbon Fiber

ARTISTIC DECOR

AR-PRIMER 12.5®

AR-PRIMER 12.5 is an advanced inorganic anti-rust/anti-corrosion primer which turns red rust into black rust on steel substrate under the control of its alkaline.

An emulsion with high interparticle bonding strength and compound forms a strong barrier.

Its film blocks water and oxygen which causes red rust. In addition, carbon fiber is added to increase surface strength. AR-PRIMER 12.5 is made of inorganic materials and is solvent free, so it is an environmentally and worker friendly product.

1. pH12.5

- Passivity on steel substrate due to the alkaline film.
- Slows down corrosion speed on pH9 ~ 10+.
- Forms a stable passive layer on steel substrates over pH12.5.

2. Process Management

- The 2 color coat system allows proper and easy application.
- The different color of the 2nd coat allows one to easily see that the entire first coat has been covered adequately.

3. Surface Preparation

- ISO 8501-2:P St2
- Preparation of welds, edges and other areas with significant surface imperfections, using basic hand tools such as wire brushes and paint scrapers, eliminating costly sandblasting.
- No need to remove previous coatings.
- Shortening the painting process.
- Direct-to-metal primer on properly prepared steel or previously painted surfaces.

Surface preparation is the most important factor that affects AR-PRIMER 12.5 film performance.

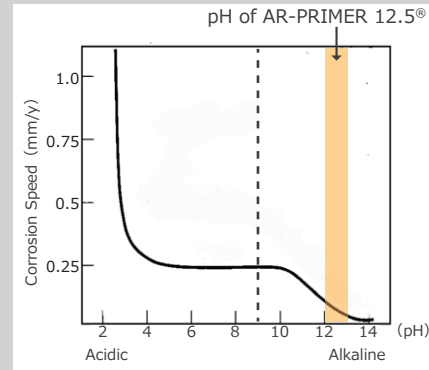
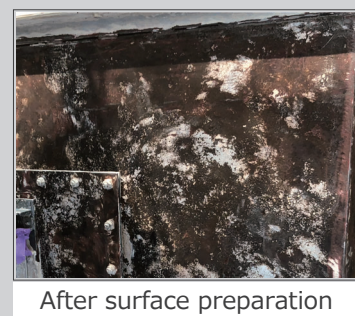


Figure. Corrosion speed and pH of iron
W. Whitman, R. Russell and V. Altieri, Ind.
Eng. Chem., 16, 665 (1924)

ADVANTAGES

AR-PRIMER 12.5 control the advanced stages of corrosion in the long term, so it is expected to reduce costs related to corrosion maintenance.

**Service life
Over 20 years**

Economic cost
Expense

Temporal cost
Time

Physical cost
Labor

01/ Water level control gates

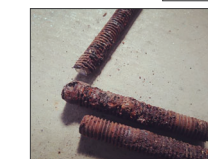
Gates for adjusting the water level of domestic water, agricultural and industrial waterways. Repair painting that neutralizes existing corrosion, prevents re-corrosion and protects steel from abrasion caused by water flow.



◀ Before. Rust forms easily around bolts and welded parts.

02/ Folded plate roof

Leaks occur due to corrosion around bolts.



◀ Example: Eroded bolts

03/ Marine steel structures

Welds and splash zones are particularly susceptible to rusting and corrosion.



◀ Before. The paint layer is blistered and fractured due to expanding rust.